

PORTOCER
TILES

GENTLE GRACE THAT TRANSFORMS SPACES WITH **INNOVATION**

SoftCER
COLLECTION

GLAZED
VITRIFIED
TILES

600x1200mm
9mm

Fresh Innovation Backed By Expertise

Portocer Tiles is a trusted name in the ceramic tile industry, renowned for offering premium GVT/PGVT tiles that blend durability, elegance, and innovation. Combining industry knowledge and the latest innovation, we specialise in providing an extensive range of stylish designs and finishes, tailored to elevate spaces worldwide.

Our dedication to advanced technology and craftsmanship ensures each product meets the highest standards of quality and functionality. At Portocer, we take pride in delivering exceptional products that inspire timeless beauty and stand the test of time.

+91 90817 11150

35+ Surfaces

// 07 SIZES
// 10 CATEGORIES

PolīCER
COLLECTION

VantaCER
COLLECTION

MattCER
COLLECTION

FlickCER
COLLECTION

SilkenCER
COLLECTION

Gr!tCER
COLLECTION

OmniCER
COLLECTION

MatryCER
COLLECTION

SoftCER
COLLECTION

GalaCER
COLLECTION

ShapeCER
COLLECTION

GrípCER⁺
COLLECTION

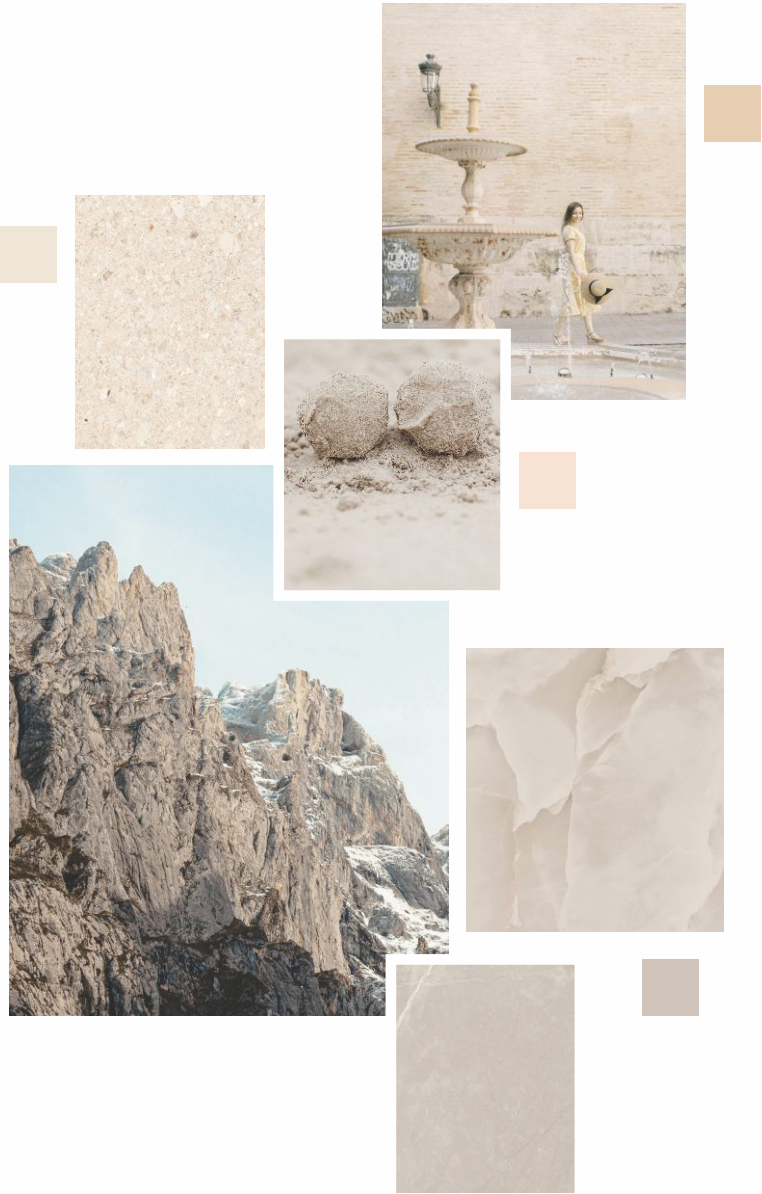
PORTOCER
TILES



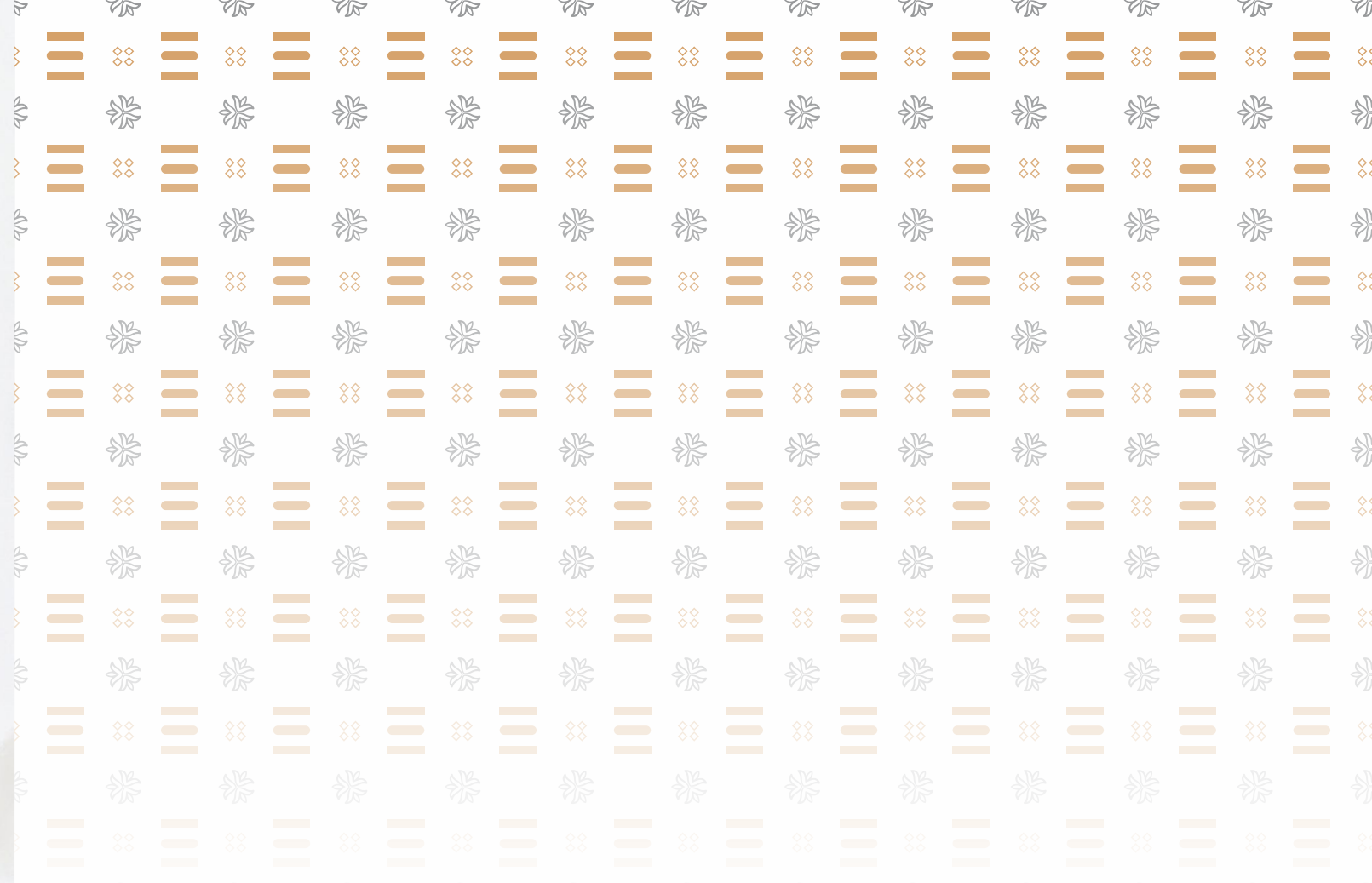
Size: 600x1200mm
Surface: **SoftCER**
Thickness: 9mm

Beauty is all about balance. The delicate edge between classic grace and modern minimalism defines an interior as one-of-a-kind. We bring you a range of surfaces that bring that balance to your spaces, with patterns inspired by the raw beauty of the desert.

Each piece in this range has been crafted with precision and the finest materials; these surfaces bring a sense of refinement to your spaces without overwhelming. Celebrate delicacy that alludes to grace and serenity in your spaces with our range of outstanding surfaces.



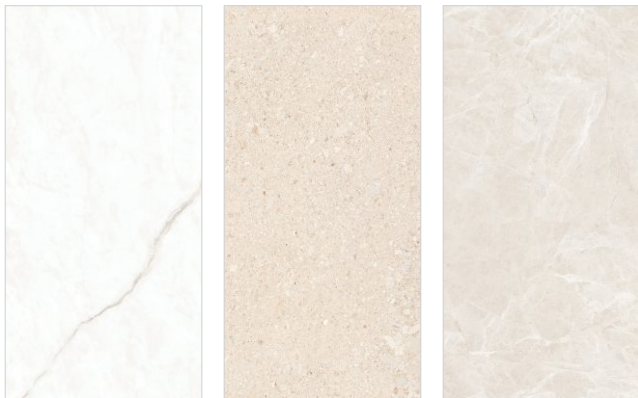
Stories that
are etched
in stone



The phrase "Italian Elegance" carries a history of art, sophistication, and refinement. It embodies the admiration for beauty and the ambition to create something better that not only awes but also inspires.

Taking this philosophy at heart, Portocer strives to deliver an extensive range of innovative surface solutions that celebrate the past, elevate the present, and set the tone for a better future. Every space carries stories, and we hope to celebrate each one.

SoftCER
9mm



Monte
Carara

Veloura
Natural

Orio
Beige

SoftCER Flow
9mm



Eos Armani
Grey

Eos Armani
Light Grey

Eros Onyx
Bianco

Eros Onyx
Brown

Saylor Ascona
Mint

Statuario Syna
Grey

 Tap on any tile
To explore it



GLAZED
VITRIFIED
TILES



SoftCER
COLLECTION



SoftCER

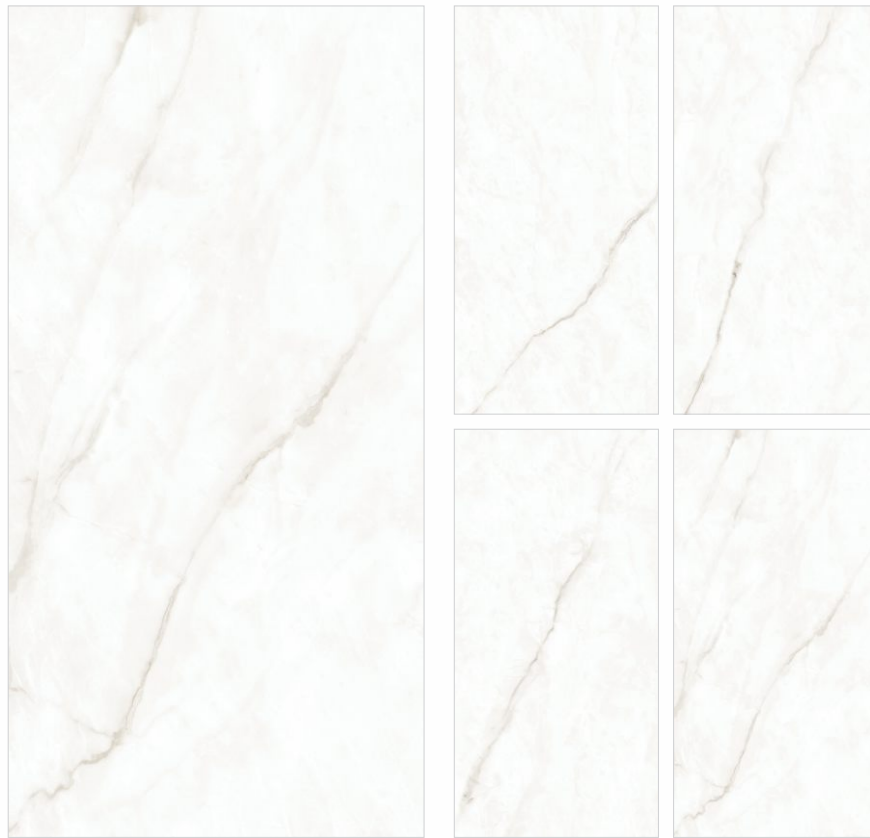
Size: **600x1200mm**

Surface: **SoftCER**

Thickness: **9mm**

Smooth to the touch, these surfaces offer a glamorous feel and a lavish look. With a dynamic format and their 9mm thickness, they are ideal for both floor and wall applications. Their subtle allure and rich tones are perfect for both residential and commercial settings, elevating them with ease.

www.portocertiles.com



Monte Carara

Size: **600x1200mm**

Surface: **SoftCER**

Thickness: **9mm**

Random: **4**

Also Available in
1200x1800mmx9mm - PoliCER



**Back to
Index**

CLICK FOR
VIRTUAL
360°





Veloura Natural

Size: **600x1200mm**

Surface: **SoftCER**

Thickness: **9mm**

Random: **4**

Also Available in
600x1200mmx9mm - PolICER



**Back to
Index**

CLICK FOR
VIRTUAL
360°





Orio Beige

Size: **600x1200mm**
Surface: **SoftCER**
Thickness: **9mm**
Random: **3**



←
Back to
Index

CLICK FOR
VIRTUAL
360°



GLAZED
VITRIFIED
TILES



SoftCER
COLLECTION

SoftCER Flow



Size: **600x1200mm**
Surface: **SoftCER Flow**
Thickness: **9mm**

Make endless beauty a part of your spaces, with the balance of subtle shimmer and classic sophistication. These 9mm surfaces effortlessly wrap your spaces with a sense of grace that soothes and a softness that whispers. Ideal choice for urban spaces, these surfaces create an illusion of space with their sprawling patterns.

www.portocertiles.com



Eos Armani Grey

Size: **600x1200mm**
Surface: **SoftCER Flow**
Thickness: **9mm**
Random: **4**

Also Available in
600x1200mmx9mm - PoliCER Flow

←
Back to
Index

CLICK FOR
VIRTUAL
360°





Eos Armani Light Grey

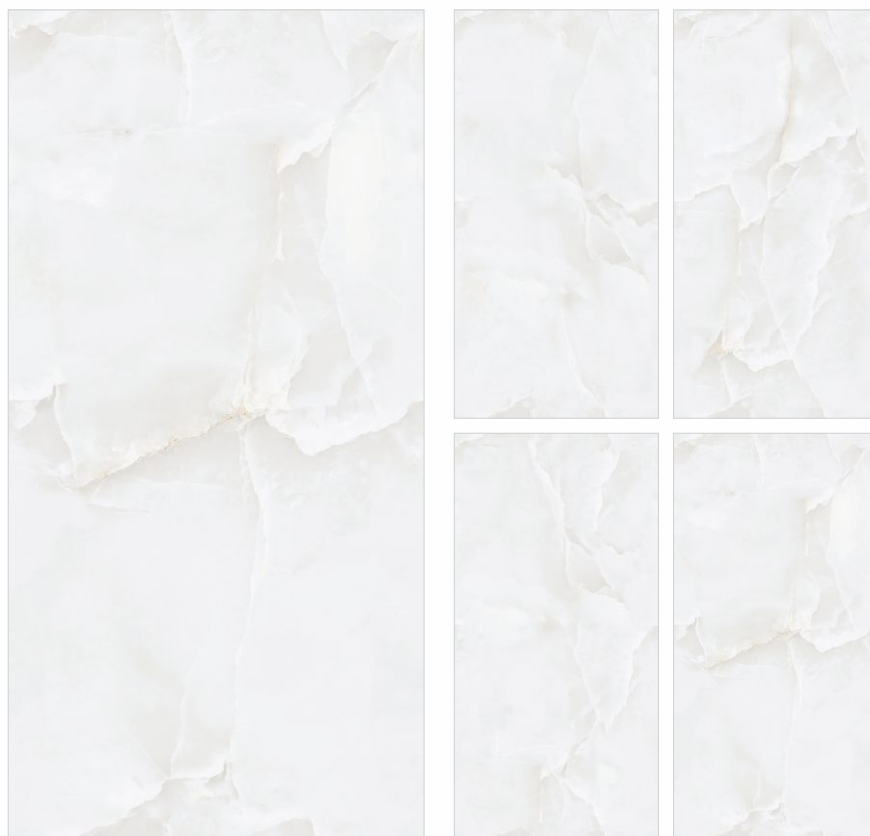
Size: **600x1200mm**
Surface: **SoftCER Flow**
Thickness: **9mm**
Random: **4**

Also Available in
600x1200mmx9mm - PolICER Flow

←
**Back to
Index**

CLICK FOR
VIRTUAL
360°





Eros Onyx Bianco

Size: **600x1200mm**
Surface: **SoftCER Flow**
Thickness: **9mm**
Random: **4**

Also Available in
600x1200mmx9mm - MattCER Glid Flow

←
**Back to
Index**

CLICK FOR
VIRTUAL
360°





Eros Onyx Brown

Size: **600x1200mm**
Surface: **SoftCER Flow**
Thickness: **9mm**
Random: **4**

Also Available in
600x1200mmx9mm - PolICER Flow
600x1200mmx9mm - MattCER Glid Flow

←
**Back to
Index**

CLICK FOR
VIRTUAL
360°





Saylor Ascona Mint

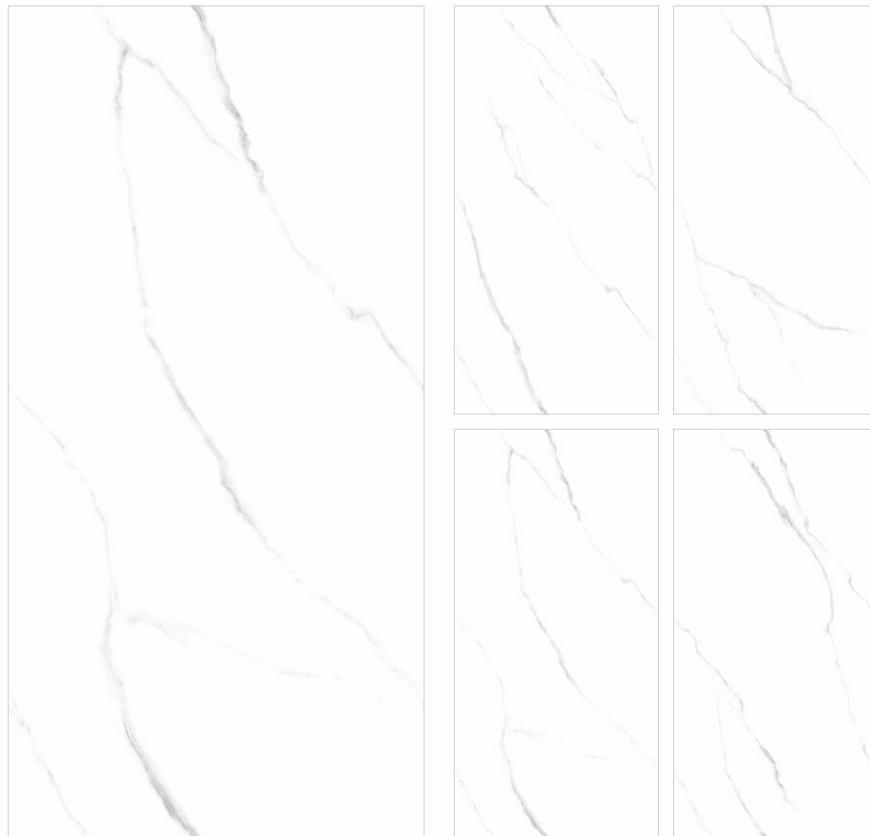
Size: **600x1200mm**
Surface: **SoftCER Flow**
Thickness: **9mm**
Random: **4**

Also Available in
600x1200mmx9mm - PoliCER Flow
600x1200mmx9mm - SilkenCER Flow

←
Back to
Index

CLICK FOR
VIRTUAL
360°





Statuario Syna Grey

Size: **600x1200mm**
Surface: **SoftCER Flow**
Thickness: **9mm**
Random: **4**

Also Available in
600x1200mmx9mm - PoliCER Flow
600x1200mmx9mm - MattCER Glid Flow
600x1200mmx9mm - MattCER Arc Glid Flow



←
**Back to
Index**

CLICK FOR
VIRTUAL
360°



TECHNICAL SPECIFICATIONS

GLAZED VITRIFIED TILES

CHARACTERISTICS	TEST METHOD	INTERNATIONAL STD ISO 13006/EN 176 GROUP BIa	PORTOCER VALUE
DIMENSION & SURFACE QUALITY			
Deviation in Length	ISO-10545-2	±0.6%	±0.2%
Deviation in Thickness	ISO-10545-2	±5%	±4%
Straightness of Sides	ISO-10545-2	±0.5%	±0.2%
Rectangularity	ISO-10545-2	±0.6%	±0.2%
Surface Flatness	ISO-10545-2	±0.5%	±0.2%
PHYSICAL & THERMAL PROPERTIES			
Water Absorption	ISO-10545-3	<0.5%	<0.2%
Breaking Strength	ISO-10545-11	>1300 N	>1800 N
Flexural Strength (Modulus of Rupture)	ISO-10545-4	>35 N/mm2	>40 N/mm2
Mohs Hardness	EN-101	Depends on the product	Min 3 (SilkenCER)
			Min 4 (PoliCER/PoliCER Glid/SilkenCER Glid/VantaCER/VantaCER Glid/GalaCER/GalaCER Gem)
			Min 5 (MattCER/MattCER Glid/MattCER Arc/SoftCER/OmniCER/OmniCER Glid)
			Min 6 (MattCER Echo/GritCER Echo/FlickCER Glid/FlickCER Melt)
			Min 7 (MattCER Melt/GritCER/GritCER Glid/ShapeCER/ShapeCER Glid/ShapeCER Mist/MatryCER)
			Min 8 (GripCER)
Resistance to Surface Abrasion	ISO-10545-7	Depends on the product	PE II (VantaCER/VantaCER Glid/GalaCER/GalaCER Gem)
			PE III (PoliCER/PoliCER Glid/SoftCER/FlickCER Glid/FlickCER Melt/SilkenCER/SilkenCER Glid/OmniCER/OmniCER Glid)
			PE III/IV (MatCER/MattCER Glid/MattCER Echo/MattCER Melt/MattCER Arc/ShapeCER/ShapeCER Glid
			/ShapeCER Mist/MatryCER/WoodNest)
			PE IV (GritCER Echo)
			PE V (GritCER/GritCER Glid/GripCER)
Skid Resistance (Slip Resistance)	ISO-10545-17	Depends on the product	<R9 (PoliCER/PoliCER Glid/VantaCER/VantaCER Glid/GalaCER/GalaCER Gem/SilkenCER/SilkenCER Glid/SoftCER)
			R9 (MattCER/MattCER Glid/MattCER Echo/MattCER Melt/MattCER Arc/GritCER/GritCER Glid
			/GritCER Echo/FlickCER Glid/FlickCER Melt/ShapeCER/ShapeCER Glid/ShapeCER Mist
			/MatryCER/OmniCER/OmniCER Glid)
			R10 (GripCER)
Frost Resistance	ISO-10545-12	Frost proof	Frost proof
Thermal Shock Resistance	ISO-10545-9	No Damage	No Damage
Moisture Expansion	ISO-10545-10	NIL	NIL
CHEMICAL PROPERTIES			
Resistance to low concentrations of acids and alkalis	ISO-10545-13	No Damage	GLA
Resistance to high concentrations of acids and alkalis	ISO-10545-13	No Damage	GHA
Resistance to household chemicals	ISO-10545-16	No Damage	Minimum GB
Resistance to staining	ISO-10545-14	No Damage	Class 3

PACKING DETAILS

Dimension (mm)	Thickness	No. of Pcs/Box	Coverage Area
600x1200mm	9mm	2 Pcs.	15.5 Sq. ft



8-A National Highway,
Matel Road, At. Dhuva, Morbi - 363 621, Gujarat, INDIA
info@portocertiles.com | +91 90817 11150

www.portocertiles.com